

SPEC SHEET + MEASUREMENTS

PORT AUTHORITY.

Port Authority® Women's Zephyr Full-Zip Jacket. L344

Product photo



This Zephyr style merges wind- and water-resisting performance with a silky smooth hand. This unlined piece is easy to wear over base or thermal layers. Modern sleek details offer instant appeal at a very appealing price.

- 100% polyester
- Interior wind flap with chin guard
- Elastic binding at cuffs and hem
- Open front pockets

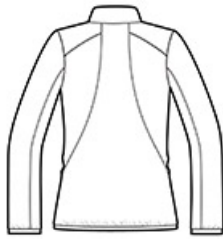
CARE INSTRUCTIONS

Machine wash cold with like colors. Do not bleach or use fabric softener. Tumble dry low. Remove promptly. Do not iron. Do not dry clean.

Sketches



front



back

SPEC SHEET + MEASUREMENTS

PORT AUTHORITY

Port Authority® Women's Zephyr Full-Zip Jacket. L344

PRODUCT MEASUREMENTS

	XS	S	M	L	XL	XXL	3XL	4XL
Size	2	4/6	8/10	12/14	16/18	20/22	24/26	28/30
Bust	18 1/2	19 1/2	20 1/2	22	23 1/2	25	27	29
Body Length at Back	26	26 1/2	27	27 1/2	28	28 1/2	29	29 1/2
Sleeve Length from Center Back	32 3/4	33 1/4	33 3/4	34 3/8	35	35 5/8	36	36 3/8

Bust: Measured across the chest one inch below armhole when laid flat.

Body Length at Back: Measured from high point shoulder to finished hem at back.

Sleeve Length from Center Back: Measure from Center Back neck to shoulder point to sleeve hem.

SIZE CHARTS

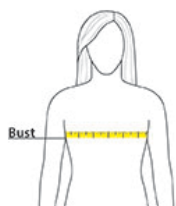
	XS	S	M	L	XL	XXL	3XL	4XL
Size	2	4/6	8/10	12/14	16/18	20/22	24/26	28/30
Bust	32-34	35-36	37-38	39-41	42-44	45-47	48-51	52-55

SPEC SHEET + MEASUREMENTS

PORT AUTHORITY.

Port Authority® Women's Zephyr Full-Zip Jacket. L344

HOW TO MEASURE



BUST

Measure under the arm and around the fullest part of the bust with arms down, keeping tape horizontal.

COLORS



Black
PMS BLACK
C



Dress Blue
Navy
PMS 533C



Grey Steel
PMS 425C